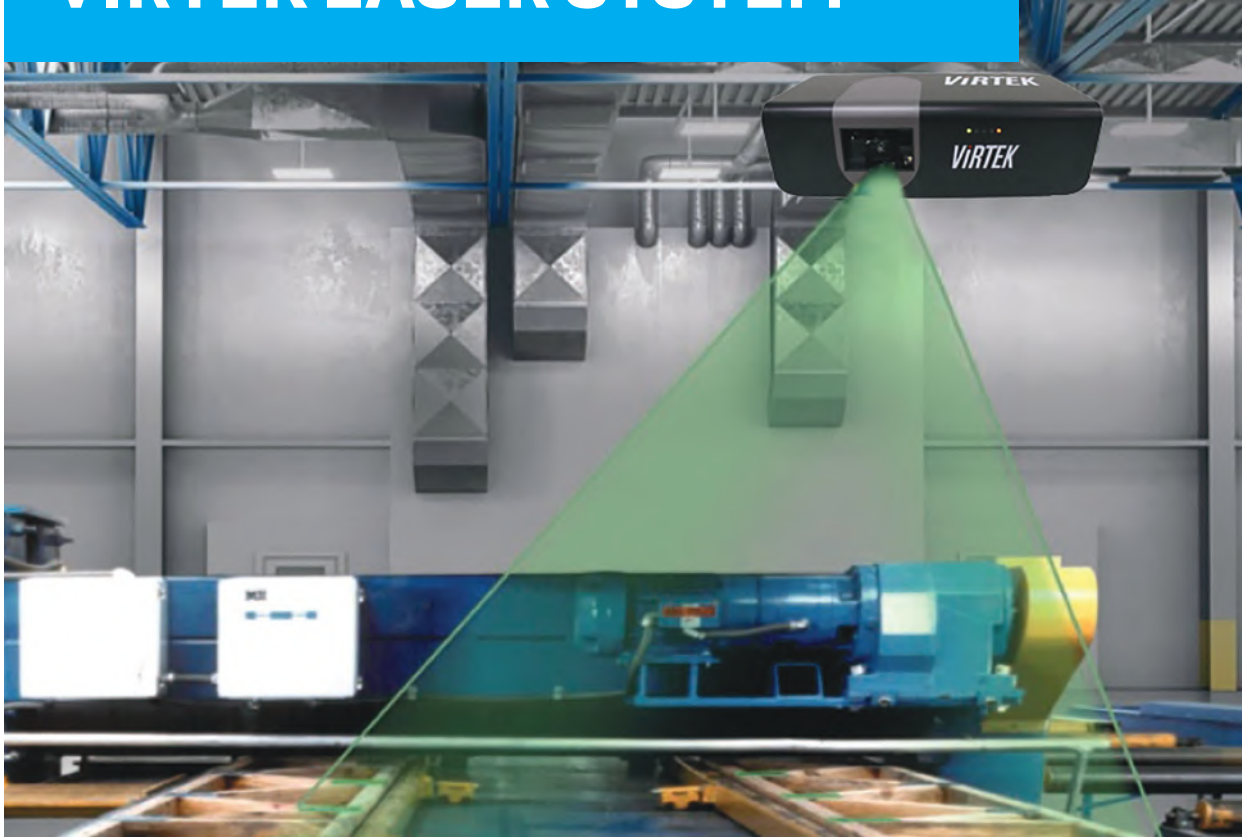


# VIRTEK LASER SYSTEM



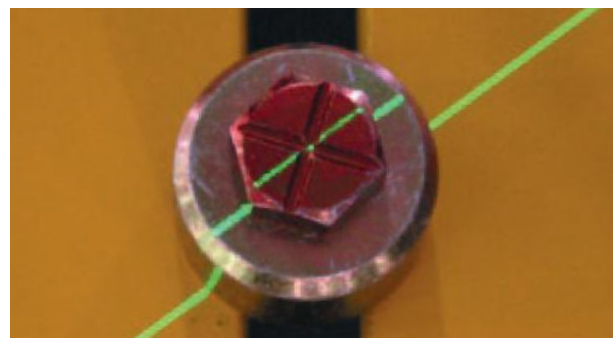
## VIRTEK LASER SYSTEM

The Virtek Trussline Laser projection system reduces set up times, errors and increases productivity.

- Build trusses without hand measuring.
- Shows precise plate locations.
- Faster assembly with increased accuracy.
- Can be operated using icons from the table.
- Easy to maintain.

The Virtek Laser System is quick, easy to use and a reliable system.

EXPAND YOUR  
CAPABILITIES

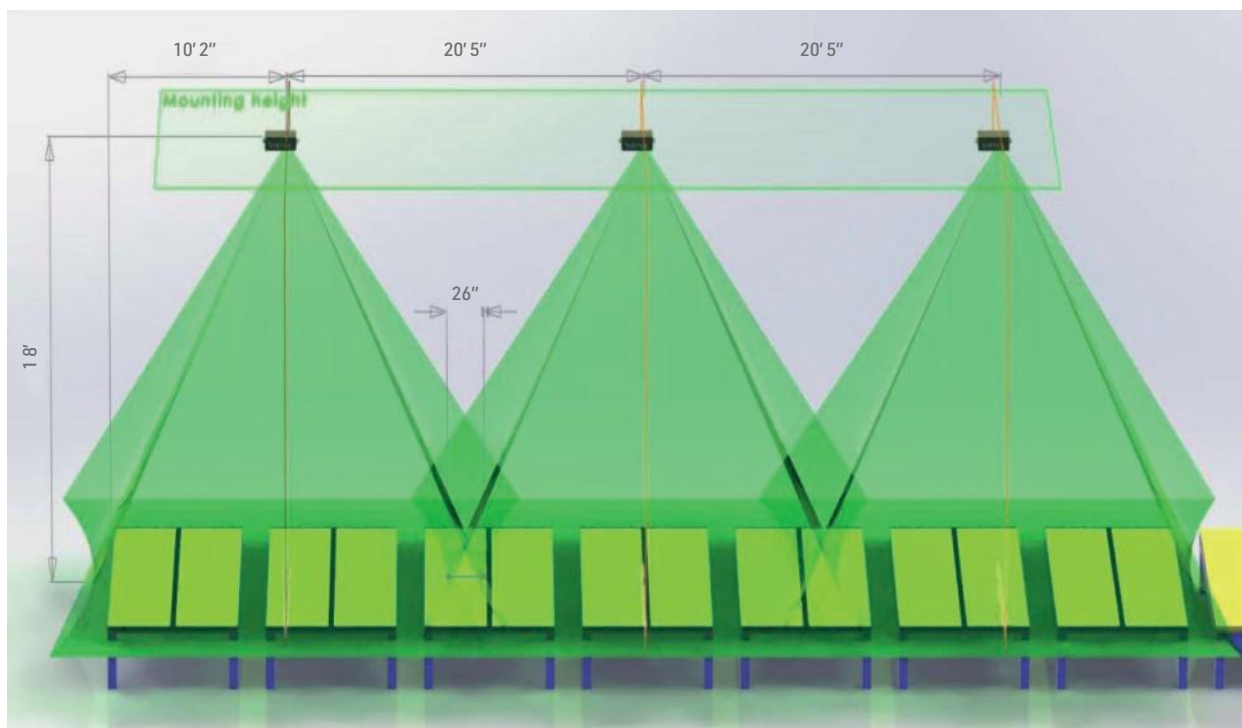


**TECHNICAL INFORMATION**

# VIRTEK LASER SYSTEM

**FEATURES**

- All software is simple to use either from the workstation or the table icons.
- Laser projection makes complicated setups easier.
- Reduce training time for new employees.
- Confirm accuracy when pressed for improved quality.
- Easy to calibrate system.
- Laser System tailored to your needs or table length.
- Works with MiTek MK1 presses and MK8c presses.

**LASER SYSTEM LAYOUT**

[MITEK.CO.UK/MACHINERY/PRESSES-LASERS/VIRTEK-LASER-SYSTEM](http://MITEK.CO.UK/MACHINERY/PRESSES-LASERS/VIRTEK-LASER-SYSTEM)

+44-138-445-1400 | [info@mitek.co.uk](mailto:info@mitek.co.uk)